



Environmental
Leadership
Summit

Andrew Meyer
San Diego Audubon Society, Director of Conservation

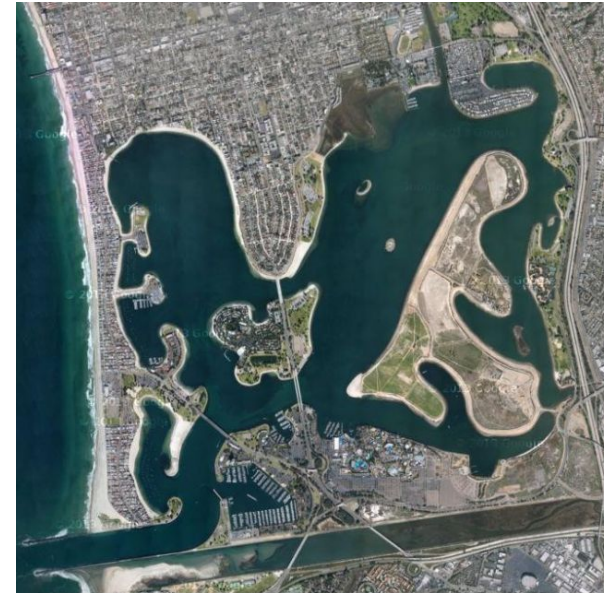
Mission Bay Through Modern Time



c. 1930



1948



2019

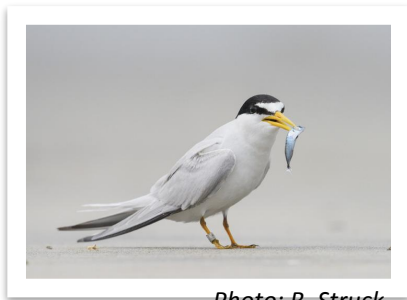


Photo: B. Struck



Photo: M. Stinson



Photo: L. Hedlund

STUDY AREA



STUDY AREA
(461 acres)



This project of San Diego Audubon is funded by CA State Coastal Conservancy and U.S. Fish and Wildlife Service.

ALTERNATIVE 3: WILDEST



LEGEND	
	Study Area
	Restoration Focus Area
	Proposed Channel
	Existing Channel
Restored Habitat Type	
	Upland
	Transitional
	Mid-High Salt Marsh
	Low Salt Marsh
	Mudflat
	Subtidal
Public Access & Recreation	
	Passive and Active Recreation with Appropriate Buffer
	Existing Bike and Pedestrian Path
	Proposed Bike and Pedestrian Path
	Proposed Pedestrian Path
	Proposed Interpretive Path
	Proposed "Fence Walk"
	Boat Launch/Storage Optional Location
	Visitor Center Optional Location
	Visitor Parking Optional Location
	Interpretive Landform or Structure
	Estuarine Science Center

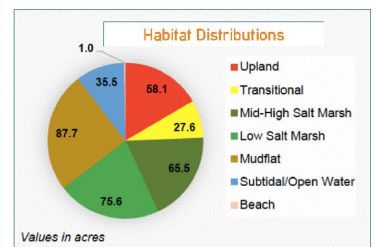


Highlights:

- 227 acres of wetlands* (75 acres by 2100 with 5.5 feet of sea level rise)
- 4,800 feet of trails

Key features:

- Best alternatives for water quality improvements, sea level rise resiliency, habitat for wildlife, and access to nature
- Excavated fill added to open water to create mudflat, saltmarsh, transitional, and upland habitat
- No need for offsite disposal, with fewer impacts to traffic and air quality




*Using the Mission Bay Park Master Plan definition of "wetlands", meaning salt marsh, transitional, and upland habitats.


Improve Water Quality


SanDiegoCounty.gov

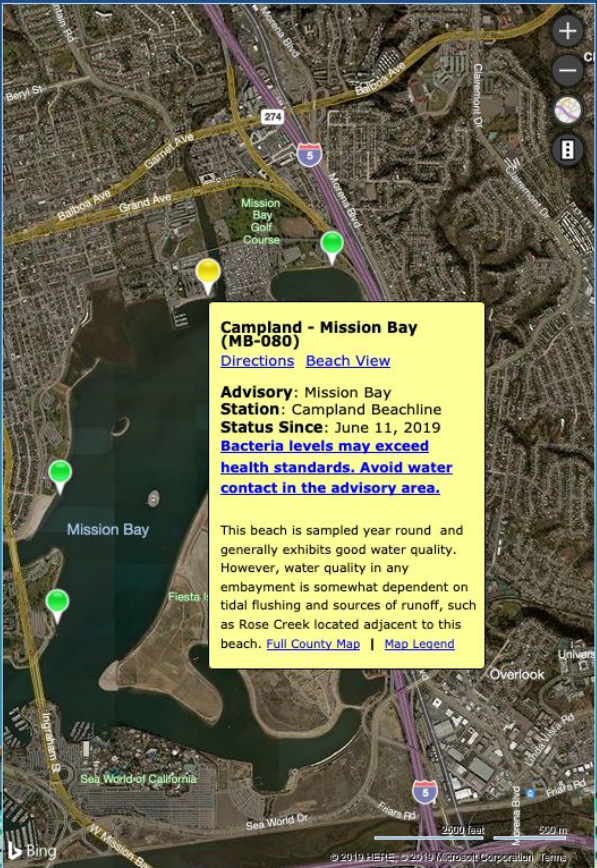
BEACH & BAY
WATER QUALITY PROGRAM
COUNTY OF SAN DIEGO DEPARTMENT OF ENVIRONMENTAL HEALTH

CHECK IN BEFORE YOU GET IN

 **TIJUANA RIVER STATUS**

 **ADVISORIES** 4

 **CLOSURES** 1



Campland - Mission Bay (MB-080)
[Directions](#) [Beach View](#)

Advisory: Mission Bay
Station: Campland Beachline
Status Since: June 11, 2019
Bacteria levels may exceed health standards. Avoid water contact in the advisory area.

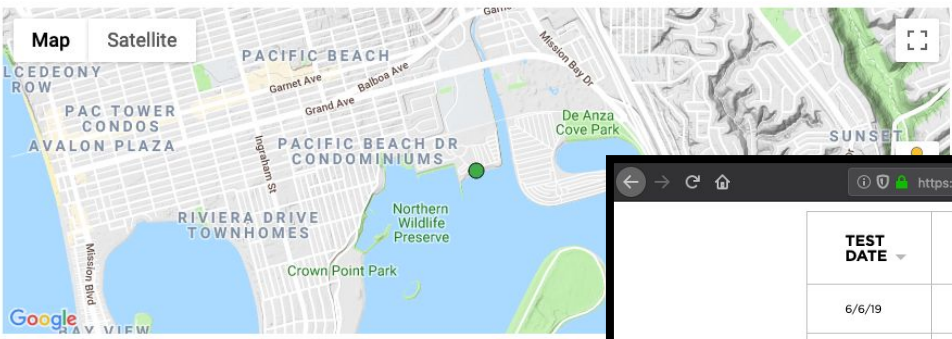
This beach is sampled year round and generally exhibits good water quality. However, water quality in any embayment is somewhat dependent on tidal flushing and sources of runoff, such as Rose Creek located adjacent to this beach. [Full County Map](#) | [Map Legend](#)

HOTLINE: 619-338-2073

County of San Diego | Department of Environmental Health

About Us Resources Historical Reports Contact Us Map

Campland- Mission Bay



TEST DATE	TESTING INDIVIDUAL	ENTERO	INDIC OF
6/6/19	Jamie	10	Low
5/30/19	Jamie	10	Low
5/23/19	Robert W.	127	High
5/16/19	Allison	2352	High

TEST DATE	TESTING INDIVIDUAL	ENTERO	INDICATION OF
6/6/19	Jamie	10	Low Bacteria
5/30/19	Jamie	10	Low Bacteria
5/23/19	Robert W.	127	High Bacteria
5/16/19	Allison	2352	High Bacteria
5/9/19	Jamie	75	Medium Bacteria
5/2/19	Alexis	10	Low Bacteria
4/11/19	Allison	10	Low Bacteria
3/28/19	Ally Senturk	404	High Bacteria
3/21/19	Allison	0	Low Bacteria
3/14/19	Jamie	10	Low Bacteria
3/7/19	Allison	439	High Bacteria
2/28/19	Jamie	393	High Bacteria
2/21/19	Jamie Owens	135	High Bacteria
2/7/19	Jamie	557	High Bacteria
1/31/19	Allison	216	High Bacteria
1/24/19	Allison	10	Low Bacteria
1/17/19	Jamie	10	Low Bacteria
1/10/19	Jamie	10	Low Bacteria

Key
 Enterococcus (MPN/100 ml):
 ● (0-35) Low Bacteria*
 ● (36-104) Medium Bacteria
 ● (> 104) High Bacteria
 ● Other bacteria measured†

* 0 means a value of <10
 † download CVS to view complete data set



Download

- [CSV Data](#)
- [JSON Data](#)
- [RSS Feed](#)

Upload

- [Input Data](#)

Retake Our Shoreline

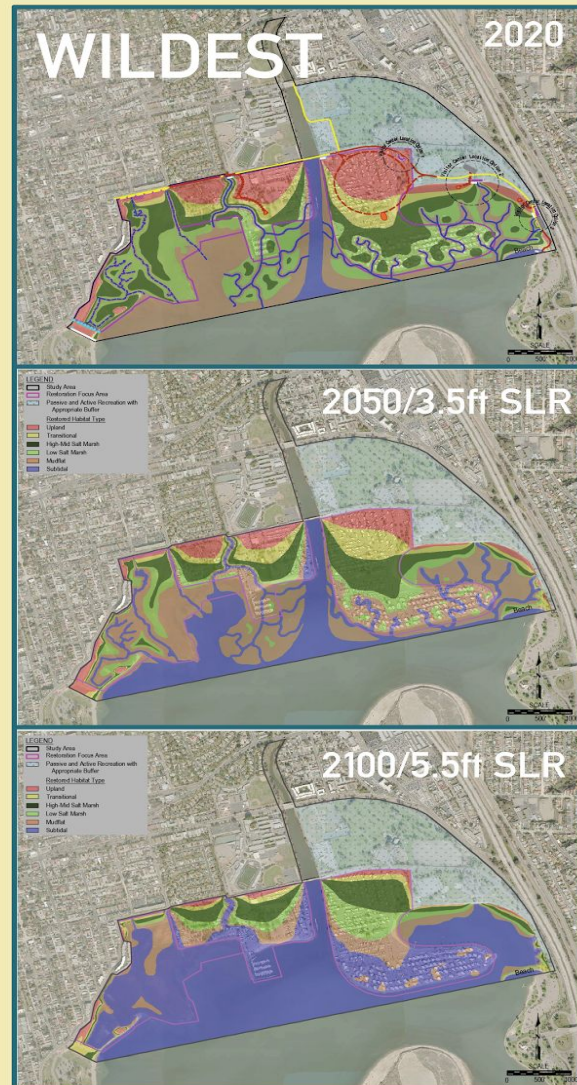


Increase Our Resiliency

TIME

Key features of "Wildest":

- 227 acres of wetlands* at construction.
- By 2100/5.5 feet of SLR the habitat shrinks to 75 acres
- This alternative is most resilient to climate change and comes closest to meeting the acreages called for in the Mission Bay Park Master Plan.





Our Coalition



CALIFORNIA
NATIVE PLANT SOCIETY

California Native Plant Society



CITIZENS
COORDINATE
FOR CENTURY 3

Citizens Coordinate for Century 3



Climate Action Campaign



OUTDOOR
OUTREACH



California Coastal Conservancy



Enviro. Ctr. of San Diego



Friends of Famosa Slough



Dems. for Environmental Action



Sierra Club



Wetlands Recovery Project



Friends of Mission Bay Marshes



Friends of Rose Canyon



Friends of Rose Creek



Stay Cool for Grandkids



Sustainability Matters



Surfrider San Diego



Rose Creek Watershed Alliance



San Diego Audubon Society



San Diego Coastkeeper



Unite Here Local 30



Wildcoast

Our legacy



Meyer@sandiegoaudubon.org

858-273-7800 X101

rewildmissionbay.org

Rendering of Malibu Lagoon Restoration and Enhancement by Richard E. Scott. Image courtesy of State Coastal Conservancy